

Mt. FUJI

VOLCANIC HAZARD MAP

~ Being Prepared
for a Possible Eruption ~

Fuji Northern Region

Though Mt. Fuji is famous for its clean, pure water and amazing scenery, it is also an active volcano with a high possibility of eruption in the future. This "Volcanic Hazard Map" was created based on the results of detailed investigations by The Committee for Hazard Maps of Fuji Volcano and Yamanashi prefecture, and contains updated information about disaster prevention and evacuation procedures. Its purpose is to inform visitors and residents of the Northern Region of Mt. Fuji about emergency procedures necessary to protect human lives in the case of a volcanic eruption.

Issued by the Mt. Fuji Volcanic Disaster Prevention Conference, JUN.2007

Web Site of the Mt. Fuji Volcanic Disaster Prevention Conference
http://www.city.fujiyoshida.yamanashi.jp/forms/info/info.aspx?info_id=1638

How should we evacuate in the event of an eruption?

① Volcanic Advisory.
(Heads up.)

In the case that volcanic activity develops around Mt. Fuji, the Japan Meteorological Agency (JMA) will broadcast a Heads Up.

Refrain from mountain climbing or sightseeing in Evacuation **Zone 1**.

Follow emergency warnings broadcast over TV, radio, intercom, and public address systems.

② Volcanic Advisory.
(Advanced Warning.)

In the case that dangerous volcanic activity becomes more frequent and an eruption is imminent, advanced warnings will be broadcast.

Mountain Climbers and Sightseers in **Zone 1** should evacuate immediately.

People in **Zone 2** and **Zone 3** should begin preparations for evacuation.

Elderly or disabled persons in **Zone 2** and **Zone 3** should evacuate at this time.

③ Volcanic Alert.
(Evacuation Necessary.)

Emergency Evacuation Announcements will be broadcast when volcanic eruptions become large enough to threaten lives.

Mountain Climbers and Sightseers must evacuate from the eruption area.

Following public evacuation instructions, persons in **Zone 2** must evacuate.

Persons in **Zone 3** should return to their homes, prepare to evacuate, and refrain from attempts to view the eruptions.

A Volcanic Alert may be announced without warning when dangerous volcanic activity occurs or is imminent.

→ Follow public announcements and evacuate in a calm and orderly manner.

Important!

It is important for your own personal security and safety to be prepared in the case of an emergency.

Let's be Prepared!

This map was made by imagining the emergency situations and dangers involved in a volcanic eruption. Emergency evacuation procedures may differ depending on your residence, place of employment, school, etc.



When is Mt. Fuji expected to erupt?

Nobody knows for sure, however over the past 2200 years there have been 75 different eruptions. The most recent eruption occurred 300 years ago. Recently, small scale earthquakes due to the movement of magma beneath the Mt. Fuji area have been regularly observed. Though it may not be soon, Mt. Fuji is expected to erupt at some point in the future.



■ Discuss with your family:

- The best route to local emergency shelters.
- It is not usually the case that all members of the family can evacuate together. Be sure to discuss with each other the evacuation methods of your workplace and/or school, and how to get into contact if an evacuation occurs.

■ When an eruption is imminent:

- Follow the warnings provided by the Japan Meteorological Agency(JMA).
- Don't be misled by false rumors about conditions of the volcano.
- Get correct information from authority sources such as, TV, Radio, Newspapers, or Town information services.
- Follow official evacuation information as it is provided.

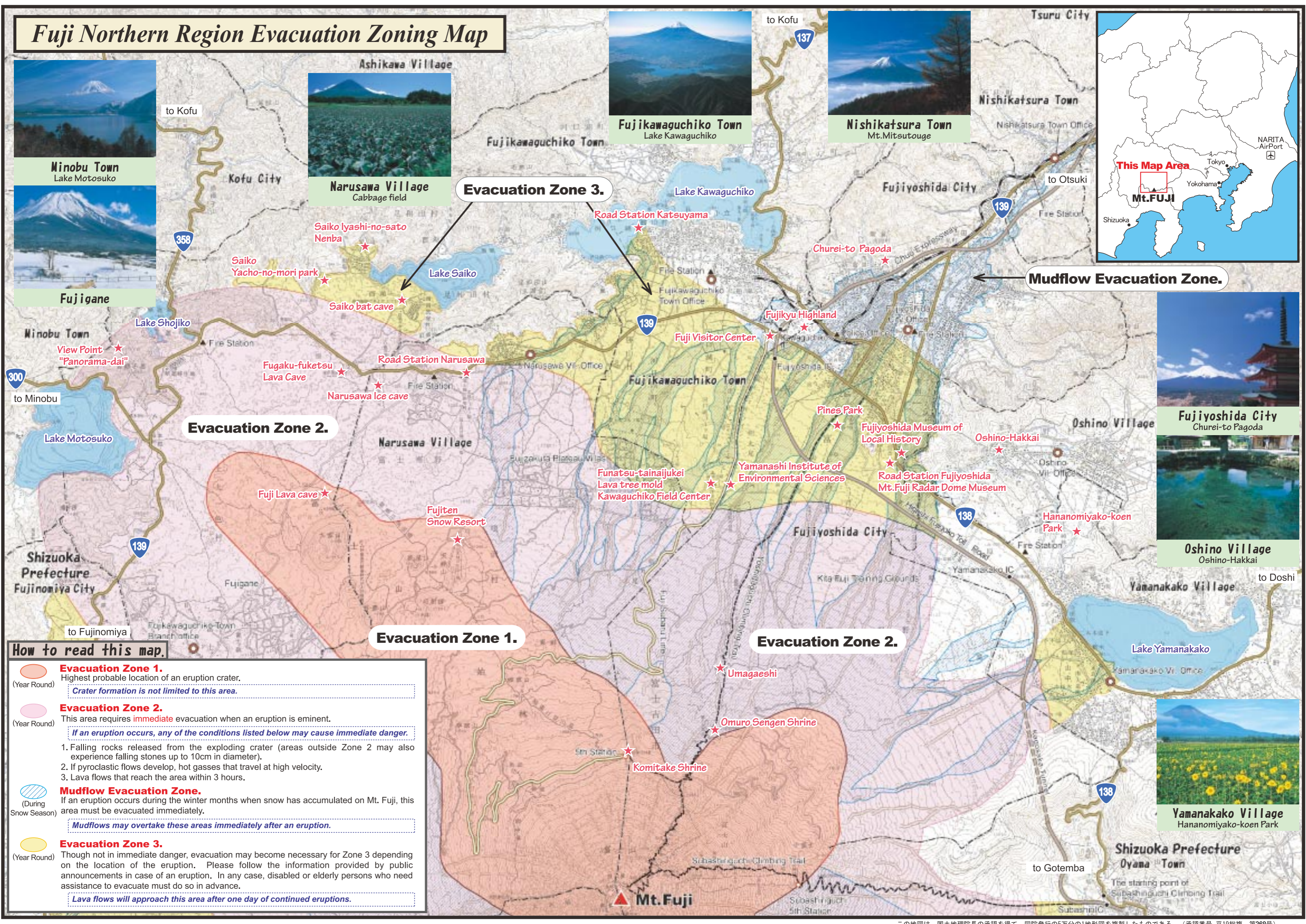


The Latest volcanic information may be found at the [Japan Meteorological Agency\(JMA\) English Home Page](http://www.jma.go.jp/jma/index.html) at <http://www.jma.go.jp/jma/index.html>

Disaster Prevention Agency Contact Information

Fujiyoshida City Office :	0555-22-1111
Yamanakako Vil. Office :	0555-62-1111
Oshino Vil. Office :	0555-84-3111
Nishikatsura Town Office :	0555-25-2121
Fujikawaguchiko Town Office :	0555-72-1111
Narusawa Vil. Office :	0555-85-2311
Minobu Town Office :	0556-42-2111
Yamanashi Pref. Office : (Disaster Prevention Section) :	055-223-1432
Yamanashi Pref. Office (Sabo section) :	055-223-1710

Fuji Northern Region Evacuation Zoning Map



Minobu Town
Lake Motosuko



Fujigane



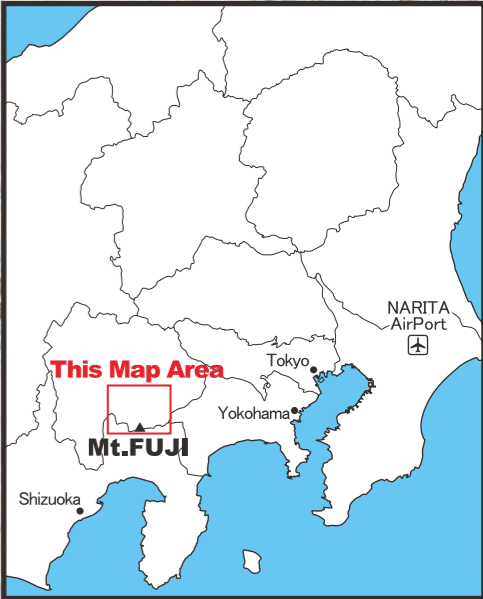
Narusawa Village
Cabbage field



Fujikawaguchiko Town
Lake Kawaguchiko



Nishikatsura Town
Mt. Mitsutouge



This Map Area
Mt. FUJI



Fujiyoshida City
Churei-to Pagoda



Oshino Village
Oshino-Hakkai



Yamanakako Village
Hananomiyako-koen Park

How to read this map.

- Evacuation Zone 1.** (Year Round)
Highest probable location of an eruption crater.
Crater formation is not limited to this area.
- Evacuation Zone 2.** (Year Round)
This area requires **immediate** evacuation when an eruption is eminent.
If an eruption occurs, any of the conditions listed below may cause immediate danger.
 - Falling rocks released from the exploding crater (areas outside Zone 2 may also experience falling stones up to 10cm in diameter).
 - If pyroclastic flows develop, hot gasses that travel at high velocity.
 - Lava flows that reach the area within 3 hours.
- Mudflow Evacuation Zone.** (During Snow Season)
If an eruption occurs during the winter months when snow has accumulated on Mt. Fuji, this area must be evacuated immediately.
Mudflows may overtake these areas immediately after an eruption.
- Evacuation Zone 3.** (Year Round)
Though not in immediate danger, evacuation may become necessary for Zone 3 depending on the location of the eruption. Please follow the information provided by public announcements in case of an eruption. In any case, disabled or elderly persons who need assistance to evacuate must do so in advance.
Lava flows will approach this area after one day of continued eruptions.